

WHOLE HEAD LETTUCE RANGE

2012



LETTUCE - Whole head



COSMIC

Lactuca sativa

Lettuce - Cos

Cosmic has a strong plant with bright attractive green leaves and a good internal blanch.

Harvest spring to autumn, and all year in Perth.

Cosmic has **intermediate resistance** to **tipburn** and **bolting**.



NAPLES

Lactuca sativa

Lettuce - Cos

Naples is a uniform compact cos lettuce with thick uniform, bright red leaves.

Harvest throughout the year.

Naples has **high resistance** to **BI 1 - 16, 18, 21 & 23**.



AVATAR

Lactuca sativa

Lettuce - Crisp

Avatar is an extremely uniform crisp lettuce with a neat frame and butt.

Head size is medium large with bright, uniform, dark green leaves.

Avatar is suited to the fresh box pack, pre pack heads and processing markets, with a good shelf life, and can be harvested late autumn and spring in Werribee and Gippsland.



AZTEC SUN

Lactuca sativa

Lettuce - Crisp

Aztec Sun will harvest in the Raider slot, but should produce larger heads, with well raised butts, during the warm seasons.

Head size is large, round to flat with dark glossy green leaves.

Aztec Sun is suited to the fresh and processing markets, filling cartons well, with a long shelf life.

Aztec Sun has **intermediate resistance** to **Ss**, **tipburn** and **moderate bolt tolerance**.



COOL

Lactuca sativa

Lettuce - Crisp

Cool has a large frame and can be harvested in the Silverado slot with improved colour, larger heads and a more uniform cut.

Head size is large, well rounded with a flat base with very dark green leaves.

Cool is ideally suited to packing in crates and cartons with its well wrapped heads and good shelf life.



HIBERNIA

Lactuca sativa

Lettuce - Crisp

Hibernia is an extremely uniform crisp lettuce with good ground clearance and a high percentage first cut with **high resistance** to **BI 1 - 16, 19, 21 & 23**.

Head size is large with dark green leaves.

Hibernia is suited to the bagging and crate markets, with a good shelf life, and can be harvested during the cool seasons in areas with mild winters.



KINGSWAY

Lactuca sativa

Lettuce - Crisp

Kingsway is a reliable Salinas variety, with uniform harvesting of good quality heads in mild conditions.

Head size is large with shiny dark green leaves.

Kingsway is suited to the fresh market in crates or cartons, with good shelf life, and can be harvested in spring and autumn in western Australia and in summer in the Adelaide Hills where conditions are mild.



LOCKYER

Lactuca sativa



Lettuce - Crisp

Lockyer is a good quality crisp lettuce with a medium to large frame and is often face cut.

Head size is medium large with dark glossy green leaves.

Lockyer is suited to the fresh and processing markets, with a good shelf life, and can be harvested during warm seasons.



SCORPIO

Lactuca sativa

Lettuce - Crisp

Scorpio is an extremely uniform crisp lettuce capable of being face cut, with butts well off the ground reducing the chance of bottom rot.

Head size is large, flattened round with dark green leaves, averaging 1.1kg.

Scorpio is ideal for crates and cartons with its large well wrapped heads and a good shelf life, and can be harvested early summer through to early autumn.



SNOWLINE

Lactuca sativa

Lettuce - Crisp

Snowline has a large frame and good ground clearance giving it a good percentage first cut. As the name suggests this is a lettuce for the winter harvest.

Head size is large, flat round with dark green leaves.

Snowline is suited to packing in cartons and bags and the processing market, with a good shelf life, and can be harvested during winter in mild winters and late winter/early spring in cooler areas.



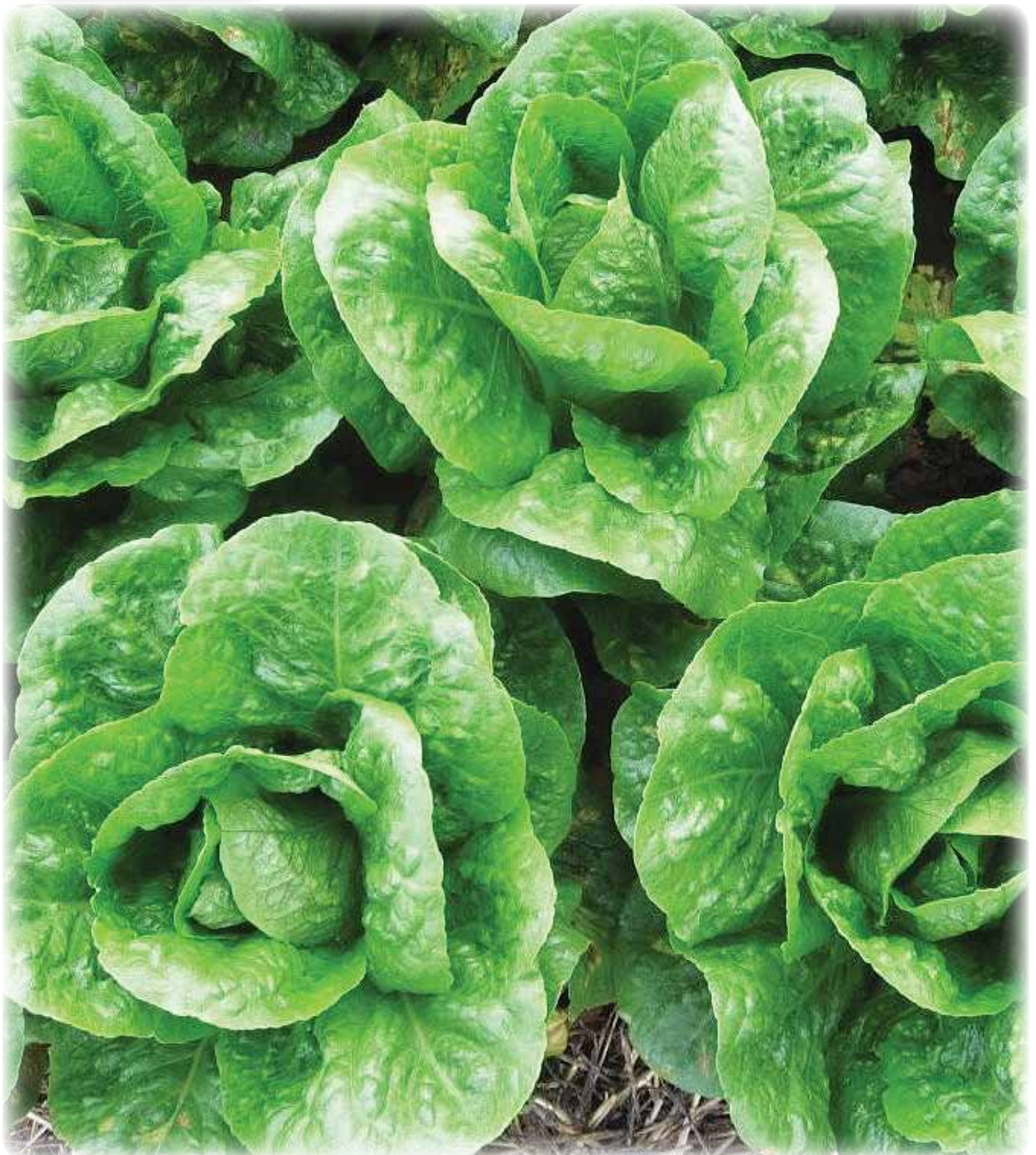
THREDBO
Lactuca sativa

Lettuce - Crisp

Thredbo is also a winter harvest lettuce, with a large frame and high percentage first cut.

Head size is large, round with dark green leaves.

Thredbo is suited to packing in cartons and bags and the processing market, with a good shelf life, and can be harvested during winter.





DELTONA
Lactuca sativa

Lettuce - Fancy

Deltona has a uniform plant with medium to dark green leaves.

It has **high resistance** to **BI 1-16, 18-20, 22-24** and **intermediate resistance** to **LMV**.

Deltona is ideal for the baby leaf and whole head processing markets, and is suited to year round production.



FLAME
Lactuca sativa

Lettuce - Fancy

Flame is an oakleaf with highly uniform bright cherry red outer leaves, and fresh looking green inner leaves.

It has **high resistance** to **BI 1-27 & Nr 0**.

Flame is ideal for the whole head processing markets, and is suited to year round production.



FRIZZMO
Lactuca sativa

Lettuce - Fancy

Frizzmo has a highly uniform plant with bright, medium to dark green leaves.

It has **high resistance** to **BI 5, 15, 16, 18-21, & 23-25**.

Frizzmo is ideal for the baby leaf and whole head processing markets, and is suited to year round production.



JAZZMO
Lactuca sativa

Lettuce - Fancy

Jazzmo is an erect endive type lettuce with bright, dark green multi leaves which are broad, thick and firm.

It has **high resistance** to **BI 1-26**.

Jazzmo is ideal for the baby leaf and whole head processing markets, and is suited to year round production.



MERULINA
Lactuca sativa

Lettuce - Fancy

Merulina is a lolla rossa with bright dark red, wavy thick leaves with a broad and firm texture.

It has **high resistance** to **BI 1-26**.

Merulina is ideal for the baby leaf and whole head processing markets, and is suited to year round production.



PIZAZZ
Lactuca sativa

Lettuce - Fancy

Pizazz is a true multi leaf lolla biondo with heavily serrated leaves and a frilly leaf margin. Heads have excellent density, and the bright glossy green leaves have a thick and firm texture.

It has **high resistance** to **BI 1-26**.

Pizazz is ideal for the baby leaf and whole head processing markets, and is suited to harvesting in late spring and early winter.



ROSEA
Lactuca sativa



Lettuce - Fancy

Rosea is an erect red oak lettuce with bright dark triple red multi leaves, and lobed leaf margins with a thick, firm texture.

It has **high resistance** to **BI 1-26**.

Rosea is ideal for the baby leaf and whole head processing markets, and is suited to spring and autumn harvesting.



SHAMROCK
Lactuca sativa

Lettuce - Fancy

Shamrock is a compact uniform oak leaf with bright green leaves.

It has **high resistance** to **BI 1-27 & Nr 0**.

Shamrock is ideal for the baby leaf and whole head processing markets, and is suited to year round production.



DISEASE KEY DEFINITIONS

Intermediate resistance: Intermediately resistant plant varieties would restrict the growth and development of the specified pest or pathogen. The plant variety may however exhibit a greater range or degree of symptoms when compared to a highly resistant variety. Intermediately resistant plant varieties will still show less severe symptoms or disease damage than susceptible plant varieties when the crop is grown under similar environmental conditions and is subjected to the same disease or pest pressure.

High resistance - Highly resistant plant varieties would highly restrict the growth and development of the specified pest or pathogen under normal growing conditions and pest pressure when compared to susceptible varieties. These plant varieties may, however, exhibit some symptoms or damage under heavy pest pressure or stressful growing conditions.

BI - Downy mildew (*Bremia lactucae*)

LMV - Lettuce mosaic virus

Nr - Lettuce leaf aphid (*Nasanovia ribisnigri*)

Ss - Corky root (*Sphingomonas suberifaciens*)





DISCLAIMER

Lefroy Valley carries out trialling throughout Australia/New Zealand prior to releasing varieties into the market place. We strongly recommend that all varieties be trialed under your growing conditions prior to commercial sowings taking place. For details of up-to-date technical information & trial results in your area please contact Lefroy Valley. This information is valid at the date of publication. All cultural and descriptive information is supplied in good faith as a guide only. Varietal performance is influenced by many variables, namely climatic, soil conditions, cultural and management practices. No liability will be accepted by Lefroy Valley or its representatives as to final performance based on this information.



1300 LEFROY

www.lefroyvalley.com

SOUTHERN AUSTRALIA

WESTERN AUSTRALIA/NT

EASTERN AUSTRALIA

PH: 03 8770 6666

FX: 03 9786 8500

PH: 08 9409 5400

FX: 08 9409 5544

PH: 07 4632 0555

FX: 07 4632 0155

Publication date: March 1st 2012